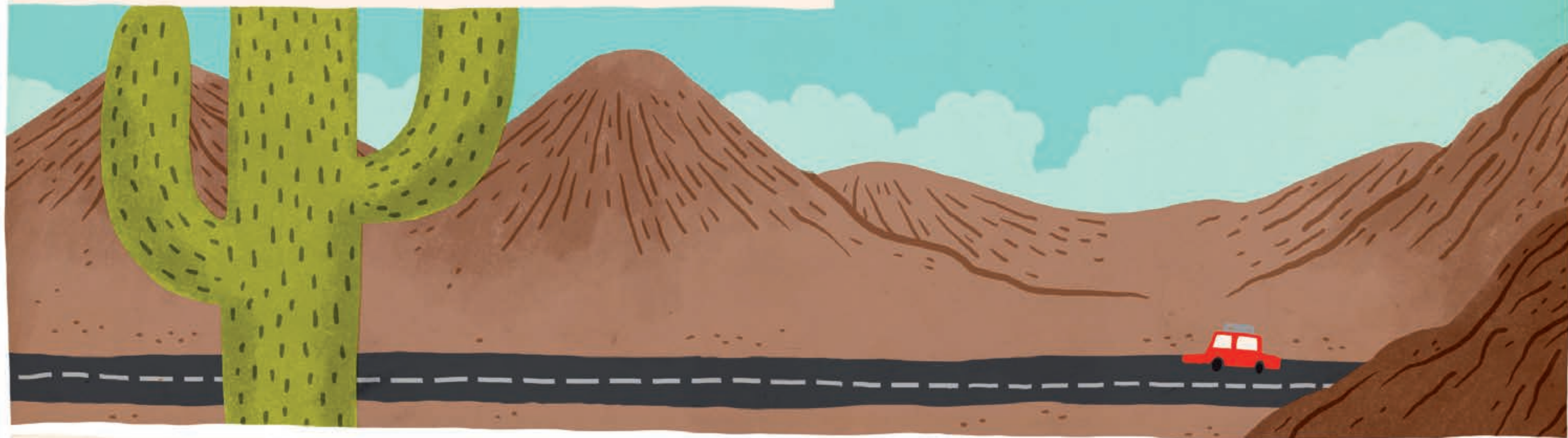




TALMA AND HER PARENTS ARE ON VACATION IN NORTHERN CHILE.





TALMA LOVES TO SEE THE MOON AND THE PLANETS.

HERE I CAN EVEN SEE THE SOUTHERN CROSS!



WHAT'S THAT?



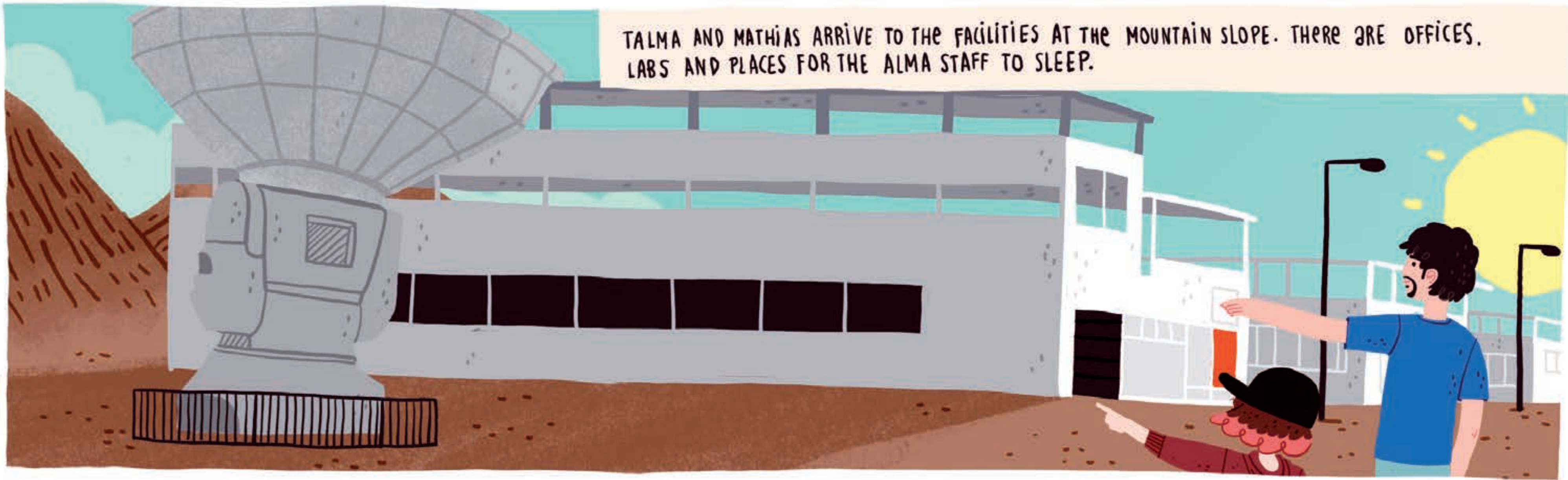








TALMA AND MATHIAS ARRIVE TO THE FACILITIES AT THE MOUNTAIN SLOPE. THERE ARE OFFICES, LABS AND PLACES FOR THE ALMA STAFF TO SLEEP.

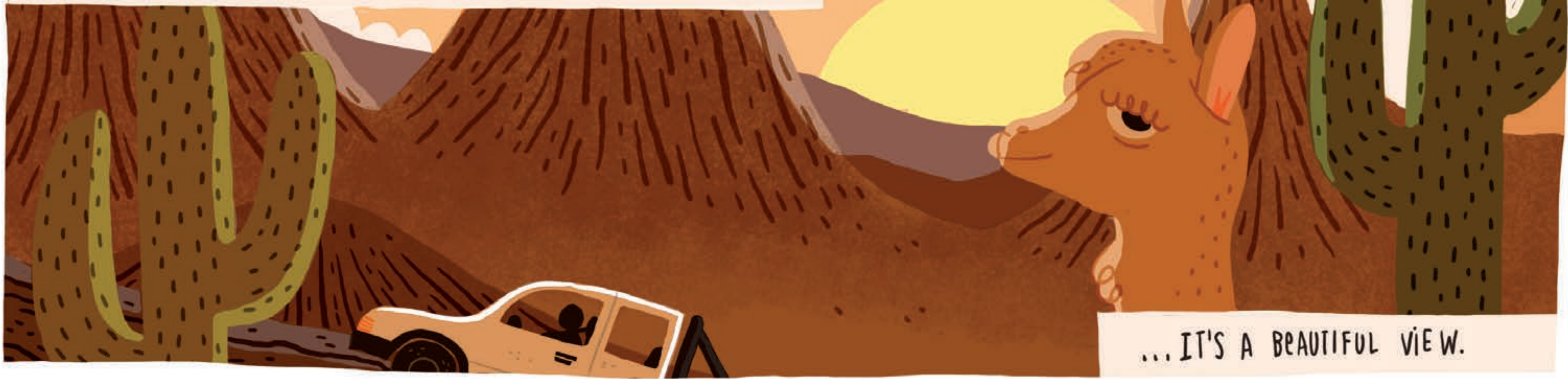




THEY DRIVE ALONG GIANT CACTUSES, A COUPLE OF VICUÑAS AND ALL AROUND THEM, THERE ARE TALL VOLCANDES...

THEY ARE SO BEAUTIFUL!

... IT'S A BEAUTIFUL VIEW.







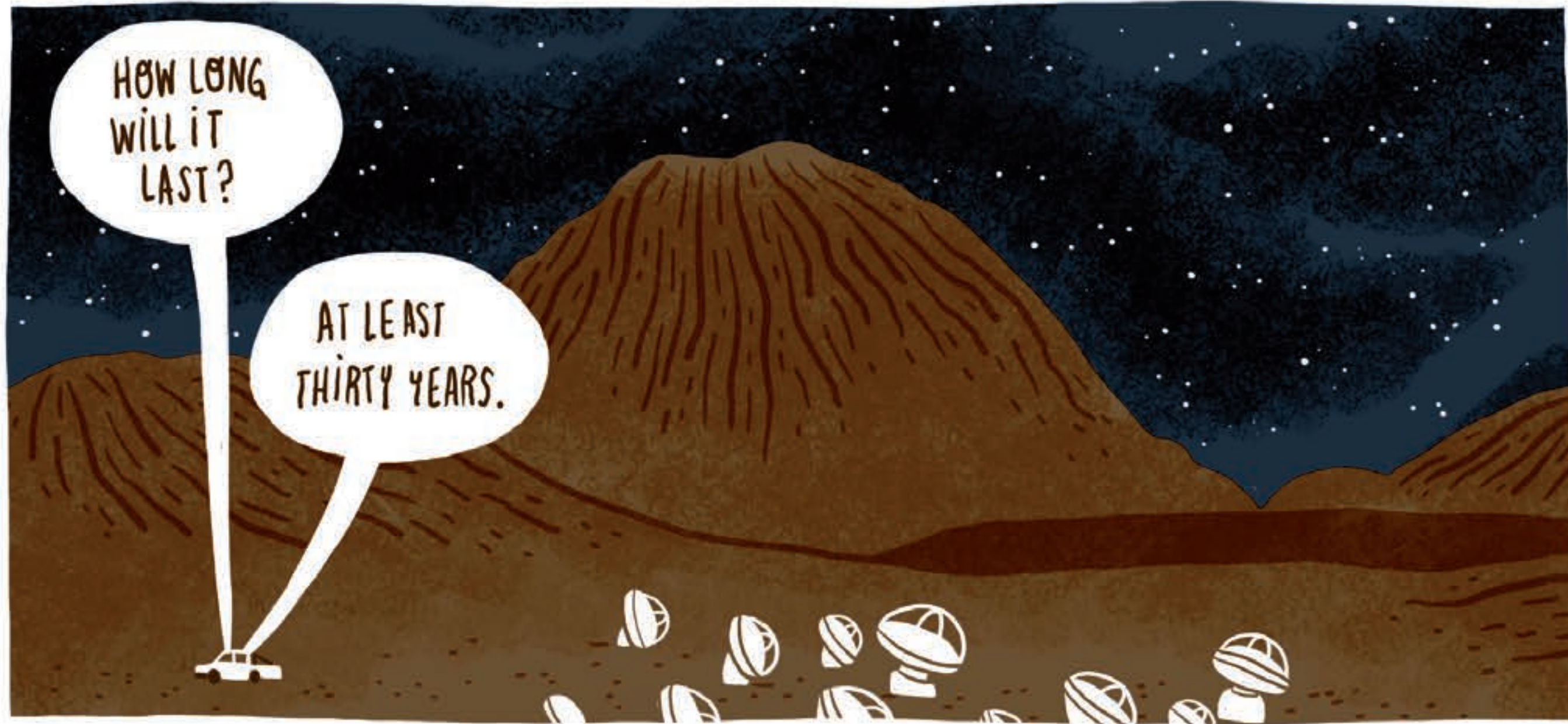


IT WAS BUILT BY MANY COUNTRIES IN
NORTH AMERICA, EUROPE AND EAST ASIA.



HOW LONG
WILL IT
LAST?

AT LEAST
THIRTY YEARS.







- ALMA -
TALMA

YOU KNOW WHAT?
WHEN I GROW UP, I
WANT TO BECOME AN
ASTRONOMER AT ALMA. I WILL
LEARN EVERYTHING ABOUT
THE UNIVERSE. IT'S THE
COOLEST JOB I CAN
IMAGINE!

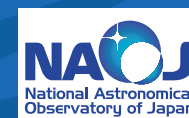


ORIGINAL IDEA: GOVERT SCHILLING

EDITING: VALERIA FONCEA

ILLUSTRATION: FRANNERD

DESIGN: ALEJANDRO PEREDO



THE ATACAMA LARGE MILLIMETER/SUBMILLIMETER ARRAY (ALMA), AN INTERNATIONAL ASTRONOMY FACILITY, IS A PARTNERSHIP OF EUROPE, NORTH AMERICA AND EAST ASIA IN COOPERATION WITH THE REPUBLIC OF CHILE. ALMA IS FUNDED IN EUROPE BY THE EUROPEAN ORGANIZATION FOR ASTRONOMICAL RESEARCH IN THE SOUTHERN HEMISPHERE (ESO), IN NORTH AMERICA BY THE U.S. NATIONAL SCIENCE FOUNDATION (NSF) IN COOPERATION WITH THE NATIONAL RESEARCH COUNCIL OF CANADA (NRC) AND THE NATIONAL SCIENCE COUNCIL OF TAIWAN (NSC) AND IN EAST ASIA BY THE NATIONAL INSTITUTES OF NATURAL SCIENCES (MINS) OF JAPAN IN COOPERATION WITH THE ACADEMIA SINICA (AS) IN TAIWAN.

ALMA CONSTRUCTION AND OPERATIONS ARE LED ON BEHALF OF EUROPE BY ESO, ON BEHALF OF NORTH AMERICA BY THE NATIONAL RADIO ASTRONOMY OBSERVATORY (NRAO), WHICH IS MANAGED BY ASSOCIATED UNIVERSITIES, INC. (AUI) AND ON BEHALF OF EAST ASIA BY THE NATIONAL ASTRONOMICAL OBSERVATORY OF JAPAN (NAOJ). THE JOINT ALMA OBSERVATORY (JAO) PROVIDES THE UNIFIED LEADERSHIP AND MANAGEMENT OF THE CONSTRUCTION, COMMISSIONING AND OPERATION OF ALMA.

MORE INFORMATION:

WWW.ALMAOBSERVATORY.ORG